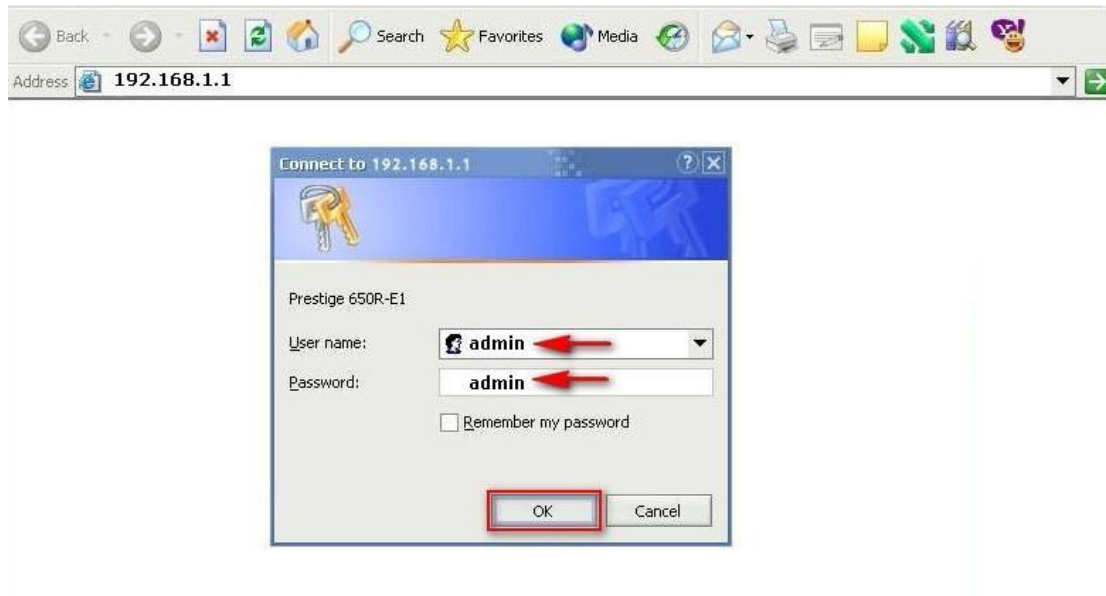
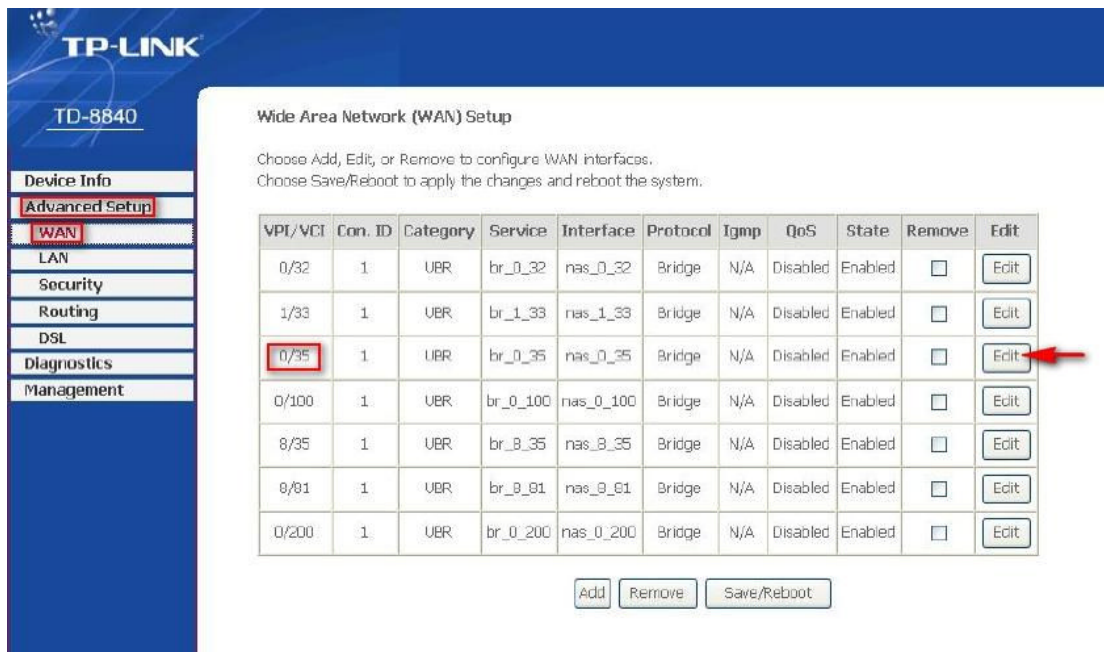


How to Setup TP-Link Router [Dynamic Configuration]



- Login into the router with **192.168.1.1** .
- The User name: **admin** .
- The Password: **admin** .



- Click **Advanced Setup** and then Click: **WAN** .
- And then from **0/35** field will click **Edit** Button .

TP-LINK
TD-8840

Device Info
Advanced Setup
WAN
LAN
Security
Routing
DSL
Diagnostics
Management

ATM PVC Configuration

This screen allows you to configure an ATM PVC identifier (VPI and VCI) and select a service category. Otherwise choose an existing interface by selecting the checkbox to enable it.

VPI: [0-255]

VCI: [32-65535]

Service Category: UBR Without PCR

Enable Quality Of Service

Enabling packet level QoS for a PVC improves performance for selected classes of applications. QoS cannot be set for CBR and Realtime VBR. QoS consumes system resources; therefore the number of PVCs will be reduced. Use **Advanced Setup/Quality of Service** to assign priorities for the applications.

Enable Quality Of Service

Back Next

- And then **VPI: 0 VCI: 35** .
- And Click **Next**.

TP-LINK
TD-8840

Device Info
Advanced Setup
WAN
LAN
Security
Routing
DSL
Diagnostics
Management

Connection Type

Select the type of network protocol and encapsulation mode over the ATM PVC that your ISP has instructed you to use. Note that 802.1q VLAN tagging is only available for PPPoE, MER, and Bridging.

PPP over ATM (PPPoA)

PPP over Ethernet (PPPoE)

MAC Encapsulation Routing (MER)

IP over ATM (IPoA)

Bridging

Encapsulation Mode

LLC/SNAP-BRIDGING

Back Next

- And then Chose **Connection Type: (PPPoE)** .
- And then Chose **Encapsulation Mode: LLC/SNAP-BRIDGING** .
- And Click **Next**.

TP-LINK

TD-8840

Device Info

Advanced Setup

WAN

LAN

Security

Routing


DSL


Diagnostics


Management


PPP Username and Password

PPP usually requires that you have a user name and password to establish your connection. In the boxes below, enter the user name and password that your ISP has provided to you.

PPP Username: 

PPP Password: 

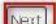
PPPoE Service Name: 

Authentication Method: 

Dial on demand (with idle timeout timer)

PPP IP extension

Use Static IP Address



- Type the **Username** and **Password** as **Show above**.
- And Chose the **PPPoE Service Name** is **AUTO**.
- And Click **Next**.

TP-LINK

TD-8840

Device Info

Advanced Setup

WAN

LAN

Security

Routing

DSL

Diagnostics


Management

Enable IGMP Multicast, and WAN Service

Enable IGMP Multicast

Enable WAN Service

Service Name:



- And then will leave the **IGMP** and **WAN Service** as **default**.
- And Click **Next**.

TP-LINK

TD-8840

- Device Info
- Advanced Setup
- WAN**
- LAN
- Security
- Routing
- DSL
- Diagnostics
- Management

WAN Setup - Summary

Make sure that the settings below match the settings provided by your ISP.

VPI / VCI:	0/35
Connection Type:	PPPoE
Service Name:	br_0_35
Service Category:	UBR
IP Address:	Automatically Assigned
Service State:	Enabled
NAT:	Enabled
Firewall:	Enabled
IGMP Multicast:	Enabled
Quality Of Service:	Enabled

Click "Save" to save these settings. Click "Back" to make any modifications.
NOTE: You need to reboot to activate this WAN interface and further configura services over this interface.

- And then click **Save** to finish the configuration.